



**MONASTERIUM
LABORATORY**

A **Q I M A** Life Sciences Company

Keynotes of the in-cosmetics 2022

Feedback, Insights
& Trends of the Testing Fields

Dr. Ilaria Piccini

Team Leader

Monasterium Laboratory GmbH

Münster, 14th April 2022

www.monasteriumlab.com



Pre-clinical Research



Clinical Research



Education

Covid-19 Pandemic

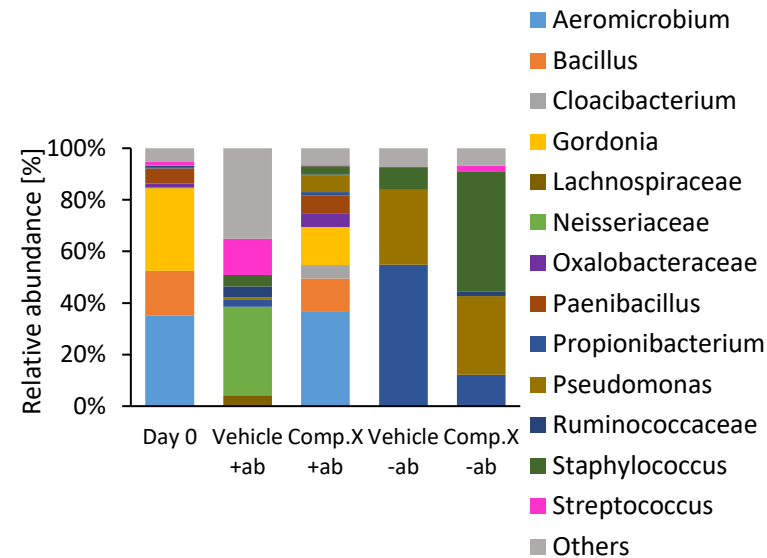
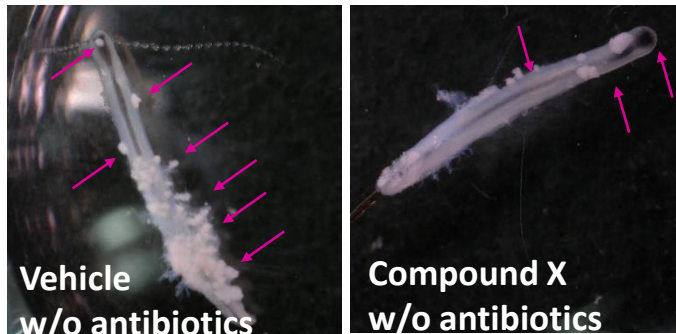
Challenges for the Testing Field:

- Psychological distress → affects skin & hair health
- Increased hair loss & skin rashes after infection with Covid-19 (Genovese et al. 2020; Landro et al. 2021)
- face masks → affect metabolism and microbiome of the skin

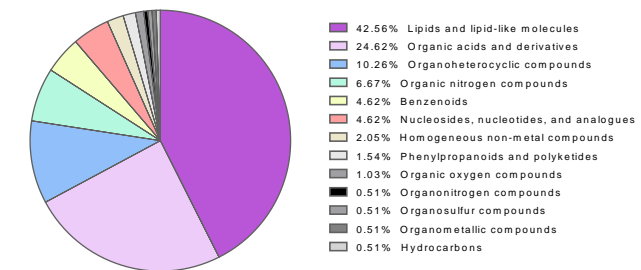


Experimental Methods used in ML:

1. Investigation of the skin & hair follicle Microbiome



2. Metabolomic analysis of skin and hair specimens



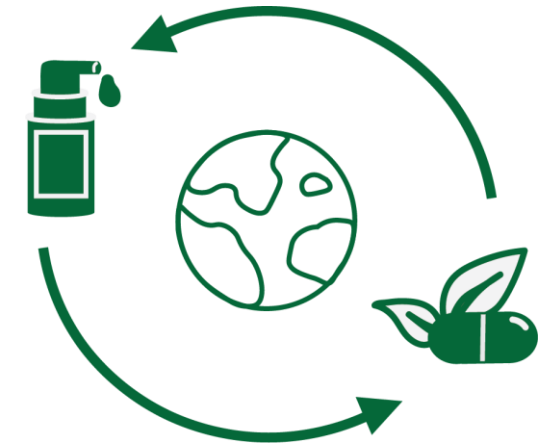
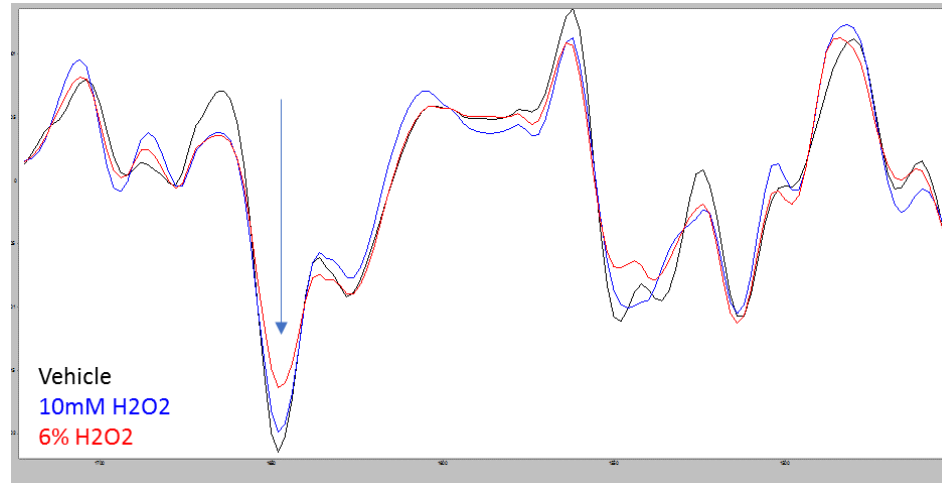
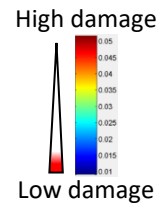
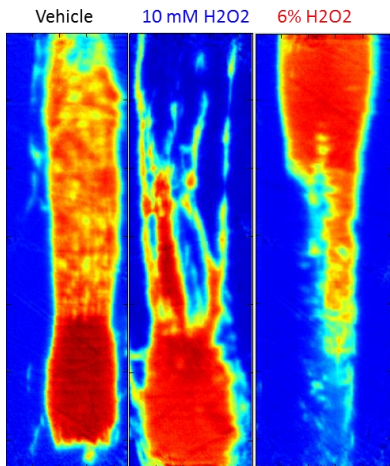
Sustainability & Natural Ingredients

Challenges for the Testing Field:

- Customers demand sustainable & biodegradable products
- Ingredients are supposed to be natural, organic and fairly produced
- „Superfoods“ & Nutraceuticals → adapt testing methods

Experimental Methods used in ML:

Analyzing human hair shaft quality *ex vivo*



→ prediction of protective effects of cosmeceuticals or nutraceuticals for hair health and quality

Exposome – Skin & Hair Health

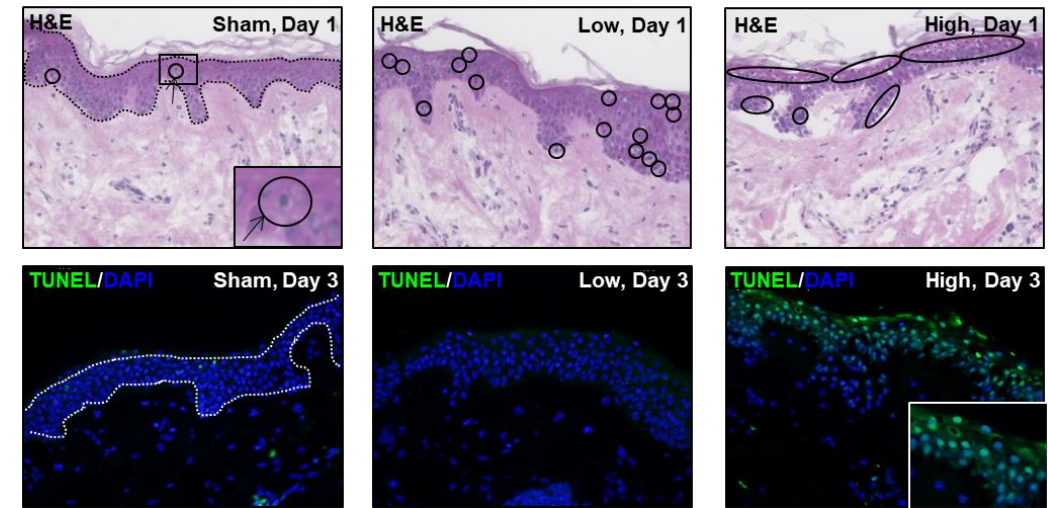
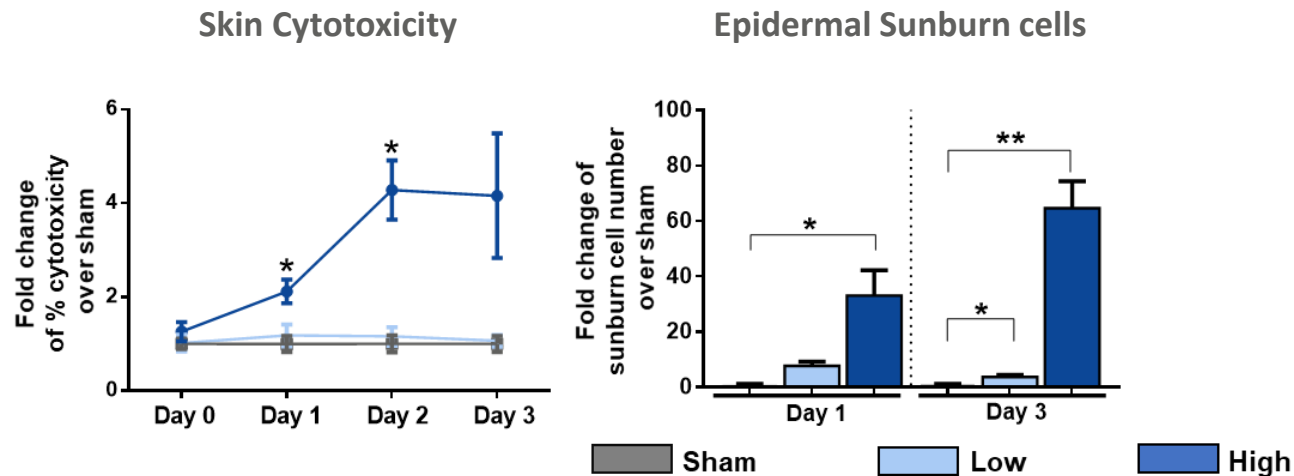
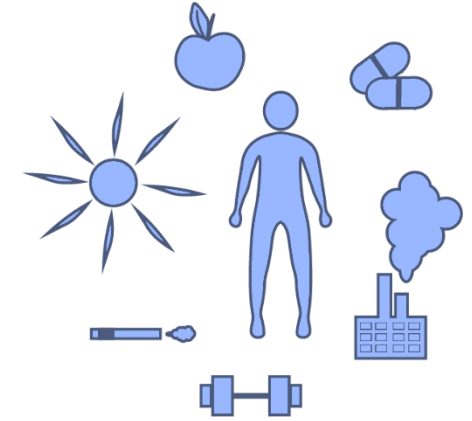
→ Environmental Influences, Diet, Lifestyle...

Requirements of the Testing Field:

- Generate reliable models to investigate the effect of the exposome on skin & hair health and the possible protective effects of cosmeceutical compounds

Experimental Methods used in ML:

UV – Light induces cell death in human skin samples *ex vivo*



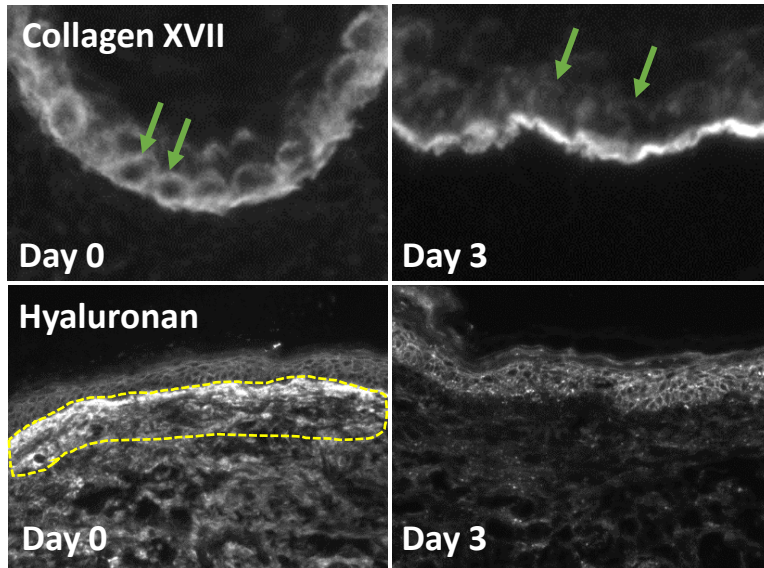
Skin Aging

Requirements of the Testing Field:

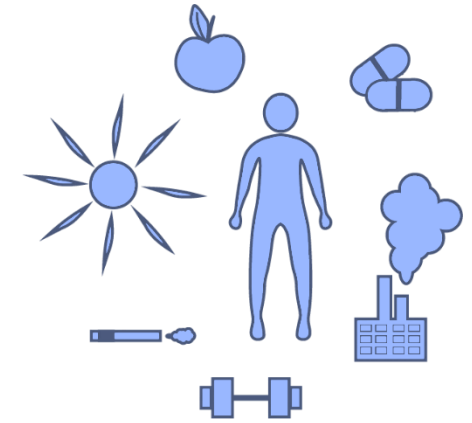
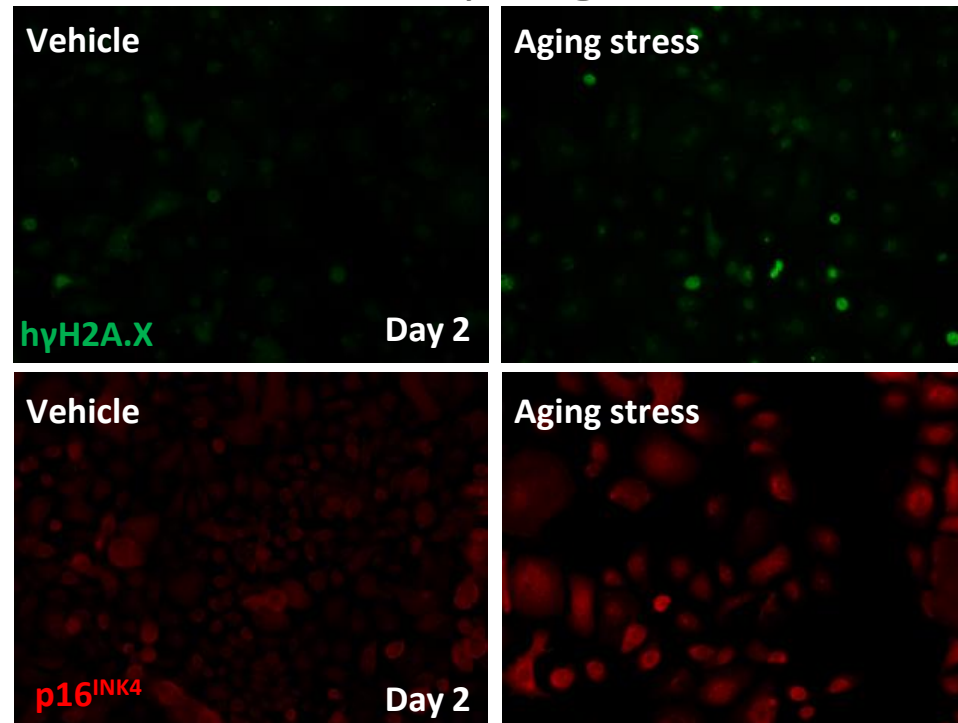
- Establish reliable models of skin aging to test pro-aging and rejuvenate compounds

Experimental Methods used in ML:

1. Spontaneous Skin Aging



2. Stress induction by exogenous stimuli



Thank you for your attention



www.monasteriumlab.com